

## End Cap Quotation Request

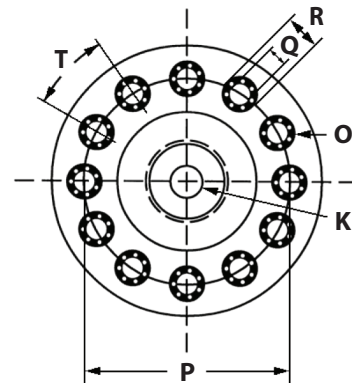
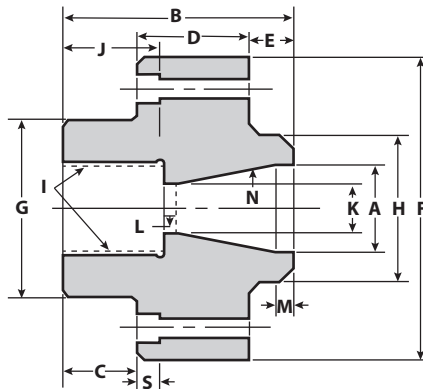
To request a quote complete this form and save it. Open an email and attach the saved form and send to [Sales@ServicesForPlastics.com](mailto:Sales@ServicesForPlastics.com)

### Contact Information:

Name: \_\_\_\_\_ Account Number (If known): \_\_\_\_\_  
 Job Title: \_\_\_\_\_ Phone: \_\_\_\_\_  
 Company: \_\_\_\_\_ Email: \_\_\_\_\_  
 Address: \_\_\_\_\_ Type of Business: \_\_\_\_\_  
 City: \_\_\_\_\_ State: \_\_\_\_\_  
 Zip Code: \_\_\_\_\_ Country: \_\_\_\_\_ How you found us: \_\_\_\_\_

### Quotation Information:

Machine Make: \_\_\_\_\_ Ounce Capacity: \_\_\_\_\_  
 Model Number: \_\_\_\_\_ Resin Type: \_\_\_\_\_



Dimensions: to (0.001")

A - Rear Opening: \_\_\_\_\_ H - Pilot Diameter: \_\_\_\_\_ O - Number of Bolt Holes: \_\_\_\_\_  
 B - Overall Length: \_\_\_\_\_ I - Thread Size and Pitch: \_\_\_\_\_ P - Bolt Circle Diameter: \_\_\_\_\_  
 C - Nozzle End Width: \_\_\_\_\_ J - Nozzle Thread Depth: \_\_\_\_\_ Q - Bolt Hole Diameter: \_\_\_\_\_  
 D - Flange Width: \_\_\_\_\_ K - Nozzle Bore Diameter: \_\_\_\_\_ R - Bolt Counterbore Dia. (if any): \_\_\_\_\_  
 E - Counterbore Length: \_\_\_\_\_ L - Nozzle Bore Length: \_\_\_\_\_ S - Bolt Counterbore Depth: \_\_\_\_\_  
 F - Major Diameter: \_\_\_\_\_ M - Depth of Straight Bore: \_\_\_\_\_ T - Bolt Hole Position (if not on center): \_\_\_\_\_  
 G - Nozzle End Diameter: \_\_\_\_\_ N - Interior Angle: \_\_\_\_\_

### Other Information: