

## Nozzle Quotation Request

To request a quote complete this form and save it. Open an email and attach the saved form and send to [Sales@ServicesForPlastics.com](mailto:Sales@ServicesForPlastics.com)

### Contact Information:

Name: \_\_\_\_\_ Account Number (If known): \_\_\_\_\_  
 Job Title: \_\_\_\_\_ Phone: \_\_\_\_\_  
 Company: \_\_\_\_\_ Email: \_\_\_\_\_  
 Address: \_\_\_\_\_ Type of Business: \_\_\_\_\_  
 City: \_\_\_\_\_ State: \_\_\_\_\_  
 Zip Code: \_\_\_\_\_ Country: \_\_\_\_\_ How you found us: \_\_\_\_\_

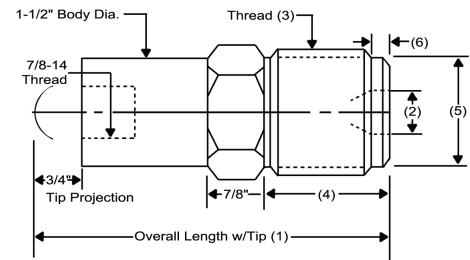
### Quotation Information:

Machine Make: \_\_\_\_\_ Ounce Capacity: \_\_\_\_\_  
 Model Number: \_\_\_\_\_ Resin Type: \_\_\_\_\_

### Dimensions: See diagram at right

1. Overall Length: \_\_\_\_\_ 4. Thread Length: \_\_\_\_\_  
 2. Rear Opening: \_\_\_\_\_ 5. Counterbore Diameter: \_\_\_\_\_  
 3. Thread Size: \_\_\_\_\_ 6. Counterbore Length: \_\_\_\_\_

Special Body Diameter: \_\_\_\_\_ Thermocouple Hole:  Yes  No  
 (Standard diameter is 1-1/2")  
 If Yes, what size: \_\_\_\_\_ (Standard is 1/8 NPT)



### Designs:

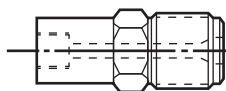
#### Replaceable Tip Type

#### Solid Body Type

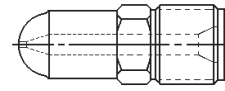
#### Select a Design:

General Purpose

Type A



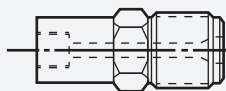
Type B



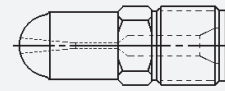
Type A  Type B  
 Type C  Type D  
 Type E

Reverse Taper (Nylon)

Type A



Type C

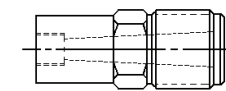


Radius: \_\_\_\_\_

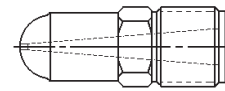
Orifice: \_\_\_\_\_

Full Taper (ABS)

Type D



Type E



**Other Information:**